

# Town of Nantucket Brant Point Shellfish Hatchery



Tara Riley~Town Shellfish Biologist

# Mission



# Bay Scallops, Quahogs, and Oyster production for Stock Enhancement



# Renovation 2015-2016



# Inside the shellfish hatchery



# Algae Production and LED's



# Increased and “Off-Season” Production

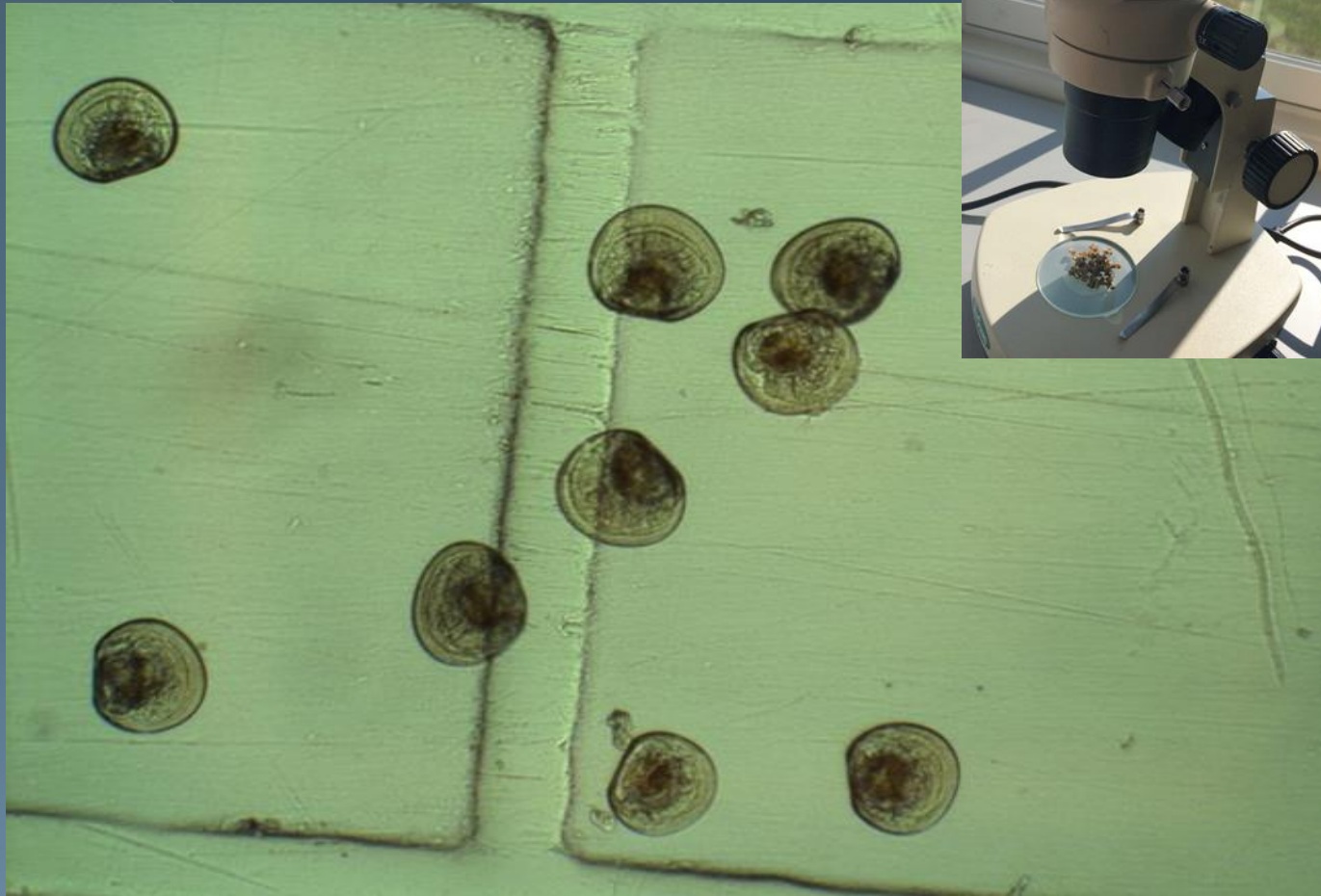


# Hatchery Spawn





# Shellfish Larvae



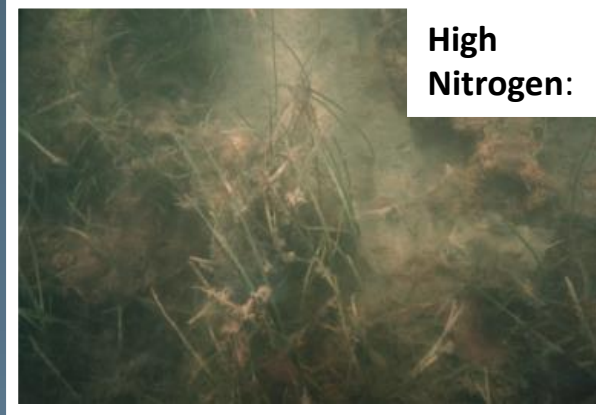
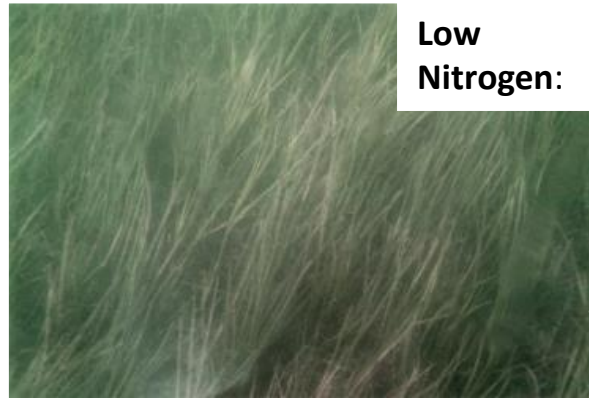
# Larval Releases and Evaluations



# Eelgrass-The Essential Habitat

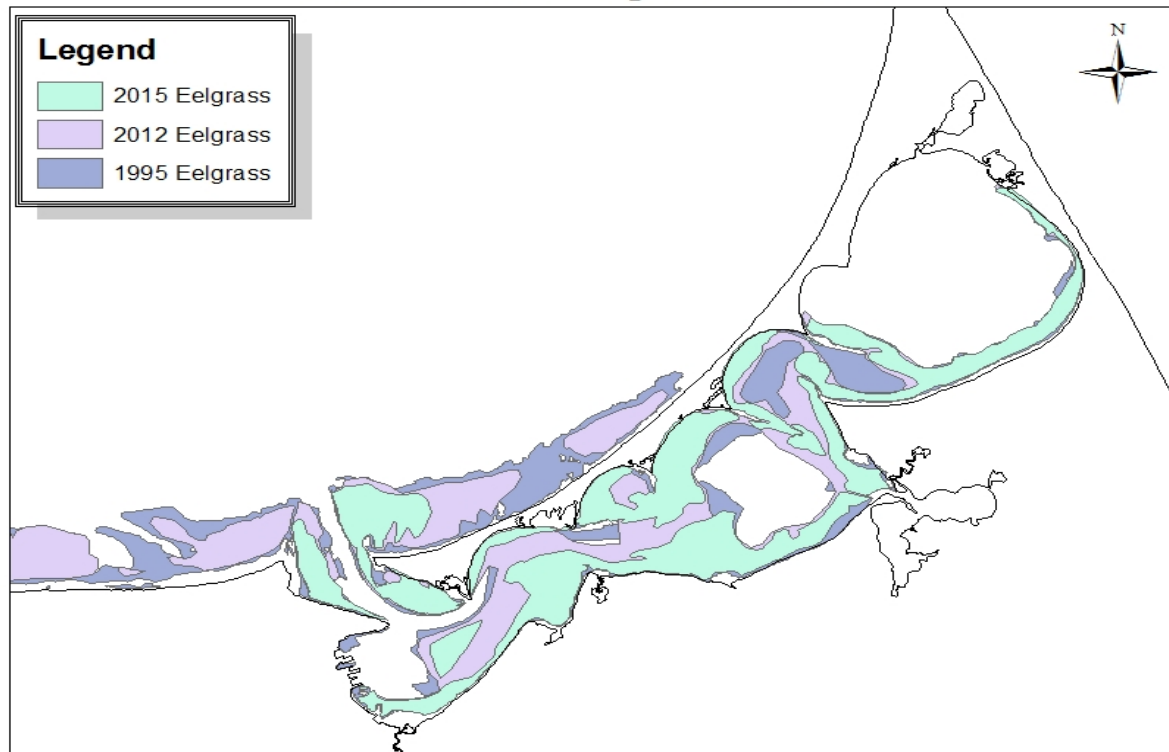


# Habitat Degradation



# Eelgrass Surveys 2016

**Nantucket Harbor Eelgrass Distribution**



Data Source: Charlie Costello aerial eelgrass mapping survey, 1995-2015.  
Data has been field verified using underwater video during the summer of 2015.

0 0.4 0.8 1.6 2.4 3.2 Miles

# Seed Management Implications



# Green Crab Studies



# Harmful Algae Blooms





# Quahog/Clam Enhancement



# Shuck it for Nantucket





# Outreach, Education, and Volunteer Opportunities



# Support and Enhance Community Shellfisheries

- Provide increased consistent production for enhancing wild shellfisheries
- Develop a seasonal grow-out area on our dock for larger shellfish culture
- Expand our outreach to other important shellfish species
- Continue to promote awareness and education